

The Parish Press

OF

PINE STREET EVANGELICAL LUTHERAN CHURCH

VOLUME 27 #8

August, 2012

ANNUAL CHURCH ICE CREAM FESTIVAL August 11 from 9 AM-2 PM Yard Sale begins at 8:00 AM

There will be Hot Dogs, Hot Sausage, BBQ, Chicken Corn and Vegetable Soups, Potato Cakes, Desserts, and Homemade Ice Cream.

Ice Cream making will occur on Tuesday, August 7th about 10 AM. Anyone able to help is invited to join in with the fellowship and tasting. Donation for ingredients will be gladly and gratefully accepted by Bill Snover. Also, please bring in your good, clean, useable items for the Yard Sale during regular office hours Monday through Thursday from 9 AM to 1 PM.

Outdoor Worship & Picnic Sunday, August 12 10:30 AM

(Coffee will be served before the start of Worship)

Please bring a covered dish to share and your lawn chair if you don't wish to sit on the picnic tables for Worship.

~~~~~

**Coming up September 16, 2012**

***Rally Day and  
National Back To Church Sunday***

#### **In this Issue:**

Page 2..... News & Notes,  
Page 2..... Simply Giving  
Page 2..... Blessing of the Backpacks  
Page 2..... A Stewardship Minute  
Page 3 Brownie G.S. & Summer Reading  
Page 4..... Restoration Report  
Pages 5-6..... Thank You Notes  
Page 7..... Birthdays & Anniversaries  
Pages 8-9..... Menus & Prayer List  
Page 9... Thank you Corner & Food Bank  
Pages 10-13..... Synod Currents  
Page 13..... W/ELCA Highlights  
Page 13-14 ..... Health & Nurses Notes

#### **With this Issue:**

Jul & Aug Calendars;  
Jul & Aug Schedules  
Love Envelopes in your packet: **Hospitality**  
Contract for Purchase of Service  
Synod Assembly Report

## NEWS AND NOTES

### SYMPATHY

We extend our sympathy to the family and friends of Harvey Maneval, brother-in-law of Sue and Marlin Neitz, who died July 20, 2012.

### **Simply Giving Begins August 1**

Our congregation will start using the Simply Giving program for donations by electronic funds transfer beginning August 1. The program will allow members to donate regularly and automatically on a schedule of their choice. It will be particularly useful for members who travel or are unable to attend for other reasons, allowing them to support the ministries and mission that God has given us.

To apply or if you have any questions, please see Gerard Tromp.

### AUGUST 19

**BLESSING OF  
THE  
BACKPACKS**  
*and other school  
items*

**During Worship  
at 10:30 AM**

### COUNCIL HIGHLIGHTS

- ◆ A brief meeting of Council was held at the annual Council Picnic on July 23 at Bohner's Grove. No further details were available.

- ◆ The next meeting of Council will be on Monday, September 17 at 6:30 P.M. in the Conference Room of the Luther House.

~~~~~

Please use this month's Love Offering Envelope to support our Hospitality Ministry.

**Hospitality is a command
from God. (Romans 12:13b)**

**From the doors of the
church being unlocked
when we arrive for
services to the lights
being on, to the coffee
we drink, the food we
eat, the Love we share,
the Prayers we say,
are Hospitality.
Hospitality is Love.
Love is what we do here
at
Pine Street.**

~~~~~

### **A STEWARDSHIP MINUTE**

*Written by S. William Snover, MD  
Financial Secretary*

#### ***Is that all I get?***

"The one who had much did not have too much. And the one who had little did not have too little".

(2 Corinthians 8:15)

Several weeks ago I was sitting in my usual spot near the back of the church (typical Lutheran) and was the last person along that side of the aisle to place my offering envelope into the plate as it was passed. The young person who was assisting the usher in collecting the offering looked into the plate, saw only five or six envelopes,

and commented in a not so quiet voice "Is that all I get?" (It should be pointed out that there were about 15 people sitting along that side of the aisle, representing 5 family groups, and 5 envelopes is all that should have been expected.) I thought to myself with a smile, about how that tactic might come in handy as the plate is passed, but then returned to reality. The church is not all about money!

No one from Finance Ministry, no one from the office, nor will the Pastor ever ask you: "Is that all we get?" What you give to the church is strictly a matter between you and your God. We do not keep score. The annual financial statement that we send out in January is strictly for tax purposes and your use.

But, perhaps we could turn the statement around and ask: "Is that all I can give?" Often, our contribution is a habit, based on what we have traditionally given in the past and not based on present personal circumstances or the changing needs of the church. As Paul visited and wrote to the early Christians in Corinth, Galatia, Ephesus and Thessaloniki, he was not timid in his request for financial support for the struggling early churches in those regions, and made sure that while giving was not a requirement, it was an expected act of love and devotion to Christ in order to help spread and share His message.

Pine Street Evangelical Lutheran Church claims God's mission to "share our faith, hope, and love through prayer, discipleship, ministry and worship". We share these things by using our gifts of time, talent, ability and treasure. As we gather on Sunday, or for that matter, any day, we need to ask ourselves: "What more can I give?"



## BROWNIE GIRL SCOUTS

A Brownie Girl Scout Troop is starting at our church on Thursday, September 6<sup>th</sup> at 6:30 P.M. This is for all girls in the first and second grades who would like to experience scouting. They will have meetings every two weeks.

For more information, please call Sharon Harner at 275-9077.

## TO the LAST PERSON



leaving the  
building: Please turn  
off the lights and  
LOCK the doors!

*(If everyone left, please call any  
Council member to come lock it.)*

Thank you!

TO the LAST PERSON  
leaving a room: Please  
turn off the lights and  
CLOSE the doors!

---

*Bible Study will resume  
September 13.*

---

## Treasurer's Report

### June- General Fund:

|          |             |
|----------|-------------|
| Income   | \$ 8,133.19 |
| Expenses | \$ 8,834.81 |
|          | \$— 701.62  |

2,637.69

### Year-to-date through April- General Fund.

|           |              |
|-----------|--------------|
| Income    | \$ 59,432.71 |
| Expenses  | \$ 67,163.59 |
| Shortfall | \$— 7,730.88 |

## SUMMER READING

There are two books available for you to borrow by author and Danville native Holly Fox Vellekoop.

*Stone Haven: Murder Along the River* is written with Danville as the setting. This book is owned by Mary Jane Snyder.

The other, *Justice and Revenge* is a novel about getting justice for someone in a very odd way. This book is owned by Sue Baylor.

Both are interesting reads. Thank you to Mary Jane and Sue for sharing.

They are available in the office. Just let Deb know you are borrowing and when you will return it.



### Dates for *Of the Land and Seasons* Worship Services:

September 23 '12 (Fall)

January 13 '13 (Winter)

April 7 '13 (Spring)



## CAMP MOUNT LUTHER

Camp Mt. Luther Program booklets for the 2012 camping season are here! The brochure is also posted online at [www.campmountluther.org](http://www.campmountluther.org).

### Coming Events:

Youth Gather Post-Event-Sep 30  
Building Youth Groups Fall Retreat-  
Nov. 2012

Advent Fun Day-Dec. 15  
Winter Camp Dec. 28-30

For more information or to register, please visit [www.campmountluther.org](http://www.campmountluther.org) call them at 922-1587 or email at [cml@campmountluther.org](mailto:cml@campmountluther.org).

## Summer Concert Series

The Montour Area Recreation Commission is pleased to announce the Free Summer Concert Series for 2012. All Concerts are at 7:00 P.M. at the Danville Memorial Park on Bloom Street unless otherwise noted.

August 7: Fred lobst, magician, will entertain at 11:00 A.M. in the Riverside Playground.

*Please bring a lawn chair or blanket and enjoy.  
Picnickers welcome!*

## Story Hour in the Park

All Story Hours are held at 6:30 PM in the Danville Memorial park. We go inside the Grove Presbyterian Church in the event of rain.

August 1: "Music"

August 8: "Frogs"

August 15: Back to School  
Stories"

## HEMOCARE AGENCY

If you are looking to hire caregivers for someone, Visiting Angels may be what you are looking for.

They are caregivers who help to keep loved ones at home and out of nursing homes and also provide respite care to family members overwhelmed with the demands of caregiving. They help with bathing, grooming, dressing, light housework, meal preparation, laundry and bed changing, assistance with mobility, errands and doctor appointments, friendly companionship and medication reminders. (They are not nurses or CNAs.)

If you need their services, please contact Robin or Daniel Miller (Directors/Owners) at 768-4747. Or you can get online and check out their services at [VisitingAngels.com/Lewisburg](http://VisitingAngels.com/Lewisburg).

## CHRISTMAS AT SEA

**Our synod's Global Mission group is supporting the program for seamen in New York as the project for our synod. This involves making up bags for the Merchant Marine Sailors for Christmas. I picked up enough bags for 4 kits, but we can make more.**

*Each bag has to have the following items:*

- One sweatshirt – hooded or unhooded (size L-XL)
- Three pairs of socks – thermal or white gym
- One casual pullover T-shirt (size M-L)
- One knit winter cap
- One can of nuts or bar of chocolate
- and a Christmas card from you.

I have patterns for knit caps or scarves.

Please only the items listed.

These items go to seamen on the freighters that bring goods in to New York and Philadelphia. These men are stuck on the freighters for

months at a time and get only a day or two on dry land. A ship's crew consists of 25 seafarers. My challenge to you is to gather enough items to give gifts to a whole crew. The deadline is November 25<sup>th</sup>. I hope to be able to assemble them in Sunday School. There may be an opportunity for someone to go along to New York to deliver these items.

Thanks,  
Sue Baylor

## NOTIFY THE CHURCH:

- When your home phone number or address changes - church records need to be corrected. It costs 85 cents every time a newsletter comes back because of an incorrect address.
- When a new baby arrives in your family or in the family of another church member.
- When a member of your family or a member of the church is sick or is admitted to the hospital, so that visits can be made and the proper people notified.
- When a member of your immediate or extended family passes away.
- When a member of your family leaves home for college or to establish a new residence.
- When something good happens to you or your family that you would like to share.

### **(PLEASE NOTE:**

***If you've been in the hospital or have been ill and have not been visited by the pastor or anyone from the church, or if your name is not on the prayer list, it may be because no one told us you were ill or would like your name on the list. You or a family member should notify the church office with***

## Financial Status of the Restoration Project:

Mr. Brannon expects to start work in mid July and will remain on site until the job is completed.

Total cost of the project: \$63,068 (does not include any unforeseen structural repairs and does not reflect interest on our loan.)

Funds received to date: \$17,827

Hoagie sales: \$2,041

Other fund raisers: \$1,507

Congregational giving: \$2,917

Carryover from "Paint" and "Sanctuary Renovation: \$11,362

Amount still needed to pay in full: \$45,541

Loan amount: \$55,000 (all of this is still in the bank, pending the start of work.)

Loan balance as of 6/30/12: \$54,284 (3 payments made)

(We borrowed \$11,000 more than we needed to cover any extra costs that might arise if structural defects in the buildings were discovered that might need repair. We can repay any unused loan money without penalty at the completion of the project.)

*requests or information on illness or hospitalization. Please also get permission before sharing this information with the church office so we can share your information with others in our Church Family. Thank you!)*



### ATTENTION MARRIED COUPLES:

Time is running out to sign up for your Fall Lutheran Marriage Encounter Weekend. Don't miss your opportunity to experience the enrichment this program provides for ALL MARRIAGES. The October 19-21 Weekend in White Haven is full; however, we'd be happy to add you to the waiting list—simply contact us at the information below. At this writing there still is room for YOU at the September 14-16 at the beautiful Olmsted Mansion and Retreat Center which is located in the Allegheny National Forest, 20 miles southeast of Warren, PA. There is a \$45 per couple registration fee, plus toward the end of the weekend you will be given an opportunity to make a confidential contribution of whatever amount you wish toward continuation of the program. Two nights lodging, 5 meals for each of you, and all supplies are included. To register for the September Weekend, go to the website: [www.GodLovesMarriage.org](http://www.GodLovesMarriage.org) and sign up using your credit

card; or for questions, or if you would like a brochure with registration form mailed to you, contact Pennsylvania Directors of Lutheran Marriage Encounter, Fred & Julie Schamber, at 724-325-3166 or email: [fischamber@comcast.net](mailto:fischamber@comcast.net).

### GLScrip Order Deadline



is

**August 12**

(2<sup>nd</sup> Sunday of each month)

**You can earn money for the church when you buy gas, school supplies, or any purchasing you need to do by purchasing gift cards. Consider using gift cards when shopping for essentials and extras. Mostly everyone dines out—everyone buys gas—consider getting gift cards to use. They work same as cash!!!**

**PROCEEDS ARE SUPPORTING OUR NEW WEBSITE!**

**CHECK IT OUT AT**

[WWW.PINESTREETLUTHERAN.ORG](http://WWW.PINESTREETLUTHERAN.ORG)

**AND PLEASE PURCHASE**

**GIFTCARDS TO HELP PAY FOR THE WEBSITE.**

**THANK YOU!**

**Hoagies are \$4.00 and—  
still a bargain!  
Order and pay the  
Sunday before the 1<sup>st</sup>  
Thursday of each  
month.**

### THANK YOU NOTES

Dear Pastor Pittsnogle,

I want to thank you and the congregation for allowing me to present the Gideon message during your 9:15 am Adult Sunday School Class on April 15<sup>th</sup>. I considered it a privilege to present a Gideon report, with an emphasis on the Gideon Card Program, to those in attendance. Gideons have opportunities around the world to distribute God's Word and to share the message of the Lord Jesus Christ.

Finally, we covet your continued prayer support. Would you please pass on my thanks to the congregation?

Sincerely yours in Christ,

*Randy Hummer*

The Gideons International

Dear Friends,

Thank you for the generous donation of \$20.00 to the Gate House Shelter. We rely on the generosity of folks like you in helping us support the homeless in our community.

The number of families and individuals needing shelter in Montour and Columbia Counties continues to grow. For the past 14 years, with the help of supporters like you, the Gate House has been here for our homeless neighbors. At this time of economic hardship, your contribution is especially important to ensure

that everyone in our community has a safe place to call home and the support they need to get back on the road to independence.

On behalf of the families and individuals who turn to the Gate House in their time of need, thank you for your support.

Sincerely,

**Thomas M. Dougher, Jr.**

Executive Director  
The Gate House

Dear Friends,

We acknowledge and thank you for your generous donation of \$60.00 in June, which we will use to buy food for our ministry.

We thank you for your much needed support of our effort to provide food to the less fortunate residents of our community. Without thoughtful supporters like you we would never be able to continue this effort.

Thank you and may God bless you for your generosity!

Sincerely,

**Maryann Richards**

Danville-Riverside Area  
Food Bank

Dear Members of Pine Street Lutheran Church,

Thank you for your gracious donation of \$140.00 to Camp Mount Luther! Your gift strengthens our outdoor ministry and allows us to

provide a Christian-based experience for our participants. We are grateful for the high value you place on the mountaintop experiences that children, youth, and adults have in our place.

We thank you for sharing God's abundance in partnership with us in outdoor ministries. Your generosity makes it possible for us to allow our participants to experience God, nature, and service in Central Pennsylvania.

God's Peace,

**Chad Hershberger**

Executive Director  
Camp Mount Luther

### **RIDES AVAILABLE**

Rides are available for people for urgent medical care.

*Volunteer drivers are:*

- ◆ Sue & Dick Baylor (279-4766)
- ◆ Bill & Mary Jane Snyder (275-4083)
- ◆ Bill & Jeannie Snover (672-3055)

Call any of the above numbers or call the church office from 9:00 A.M. to 1:00 P.M. at 275-2110.

### **Pastoral Care:**

For Pastoral Care, please call Pastor Keith's home number (951-2350-if no answer, please leave a message).

*Please do not leave a message on the church's answering machine.*

*(The answering machine at the office is not regularly checked if it is after hours, a weekend, or if Pastor is away.)*

### **SPONSORS**

**Communion Bread** can be store bought from the bakery. Please sign up on the designated sheets on the bulletin board in the narthex. A sponsor is needed for the month (or by the week) for December.

**Bulletin** sponsor openings are available for all of October.

There are **Altar Flower** openings for October 28 and December 16.

When signing up for Altar Flowers, Bulletins or Sanctuary Candle, please write your name and *in honor of* or *in memory of* message on the appropriate poster in the narthex or speak to Deb at the church office. The costs are:

- \$20.00 per week for **Bulletins**;
- \$33.00 per week for **Flowers**;
- \$14.00 per month for the **Sanctuary Candle**.

Thank you to everyone who sponsors these important supplies for our worship services.

### **GOOD SAMARITAN RPT.**

*For the month of June:*

505 clients with clothing  
115 clothing donors  
24 Bedding clients  
4 Medical Uniform clients  
9 Bath & More Clients  
7 Crisis fund clients

17 Pieces of Furniture

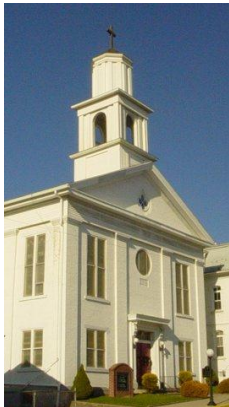
Received

0 Furniture Clients



Please call them at the number below if you have good used furniture or working appliances that you no longer need.

**Good Samaritan Mission**  
Hours are Tues., Wed., & Thur.  
**9 AM-5 PM**  
**275-2500**



### ***Ministries at a Glance!*** (meeting times)

Administration – Tom Herrington, Bill Snover (Coordinator), Mary Sticklin, Burrnell Metzger; Sandra Reibsome; Council liaison-Mary Ann Landi (meets as needed)

Caring Ministry – Sue Baylor, Coordinator (dates vary)

Family and Christian Education Ministry  
FACE – (2<sup>nd</sup> Monday @ 6:00 PM)

Finance Ministry – Michael Dennehy, Coordinator (2<sup>nd</sup> Monday @ 7:00 PM)

Hospitality Ministry – Larry Troy, Contact Person (1<sup>st</sup> Wednesday @ 11:00 AM)

Property Ministry – Nancy A. Leighow and Nancy K. Leighow- Co-Coordination (2<sup>nd</sup> Tuesday @ 7:00 PM)

Women of the ELCA – Co-presidents: Sue Baylor & Mary Ann Landi (usually 1<sup>st</sup> Tues.)

Worship & Music Ministry – Council liaison is Ron Kline (2<sup>nd</sup> Monday @ 11:00 AM)

**Jubilee Kitchen**  
**October 27, 2012**

### ***Audio tapes***

of the service are available for homebound and others who can't make it to church. Contact Sue Baylor at 279-4766, if interested.

### **AUGUST BIRTHDAYS**

- 1 - Megan Fitzpatrick
- 2 - Eleanor Ann Hummer; Troy Patterson; Allen Snyder
- 4 - Allison Jordan
- 5 - Ian Kohut; Vicki Reeder; Judith Rogowsky; S. William Snover
- 6 - Thomas James, Jr.; Sandra Reibsome
- 8 - Thomas Herrington
- 9 - Amy Adams; Mae (Peggy) Nicole Crowley; Eleanor Wray (90)
- 12 - Mark Snyder; Nelena Swank (90)
- 15 - Patricia Fry; Marin Leighow
- 18 - Michael Eagan; James O'Brien
- 19 - Jon Curry, Sr.; Gerard Tromp
- 21 - Judy Stamm
- 22 - Tyler Patterson
- 23 - Michelle Brady; Clara Hauck
- 26 - Samantha Eyer
- 28 - Lillian Stahl; Matthew Sticklin



### **AUGUST ANNIVERSARIES**

- 3 - Nicole and Caz Morgan
- 5 - Luahan and Thomas Herrington
- 13 - Mary and Arthur Sticklin
- 15 - Olga and Paul Sticklin
- 18 - Cecily and Jeremy VanVaerenewyck Tharp
- 24 - Mary Jane and William Snyder
- 25 - Brenda and Michael Dennehy
- 31 - Lin and Denny DiOrio

### ***ADVERTISING***

*Mary Ann Landi will handle church advertising. Most area newspapers will print this information free of charge as a news item. If you have an event coming up you would like advertised, please give as much information to her at least a month in advance to get the word out about what God is doing at Pine Street!*

~~~~~

2012 COUNCIL MEMBERS

Pastor: L. Keith Pittsnogle
Treasurer: David A. Doran

Elizabeth Baylor-President
Jean Crumb
Michael Eyer
Ronald Kline
Mary Ann Landi-Vice President
Nancy A. Leighow- Secretary
Nancy K. Leighow
James O'Brien
Gerard Tromp
Terri Wydra

~~~~~



**We want to open up and expand God's presence by becoming more active in the community.**

**You can help!**

**Tell your friends--tell your neighbors--come see--Come See what God is doing at Pine Street!**

**Invite everyone you know to come to church.**

**Tell them we have a great fellowship hour.**

**Tell them that God loves them and we do too.**

## **Fellowship Menus**

**PLEASE SIGN UP IN THE BOOK  
TO BRING ITEMS FOR LUNCH**

### **AUGUST**

Aug 5: BBQ, Rolls, & Tossed Salad  
Aug 12: Picnic—Covered Dish  
Aug 19: Sandwich Fixings, Veggie & Dip Platters  
Aug 26: Hot Dogs, Rolls, & Baked Beans

### **SEPTEMBER**

Sept. 2: Pasta Casseroles & cold salad  
Sept. 9: Covered Dish  
Sept. 16: Macaroni & Cheese & Tossed Salads  
Sept. 23: Not available  
Sept. 30: Not available

***Each Sunday needs a Clean-Up Crew. Please volunteer!***

### **FELLOWSHIP HOURS**

A loose leaf notebook is on the podium in the social hall with menus for each Sunday (except the second Sundays of each month when we have a Covered Dish meal).

***Please look at the meals listed above to see if you would be able to bring in one of the dishes. Then sign up in the***

**notebook.** If you would like to supply a dessert, please write that down.

### **Items needed regularly:**

- ☺ Dessert plates (paper or Styrofoam)
- ☺ Coffee cups (Styrofoam)
- ☺ 100% fruit juice (no red drinks please)
- ☺ A main dish, side dish or dessert for any Sunday Fellowship Hour
- ☺ Any donations to "Hospitality Ministry" to help fund our many outreach and church events

### **ANNOUNCEMENT:**

***Families can still sponsor a Sunday Fellowship meal of their choosing—just pick the date in the book on the small podium in the social hall and write in that you are sponsoring the meal!***  
***Thanks!***

***God does not  
comfort us  
to make us  
comfortable,  
but to  
make us  
comforters.***

***~ Source unknown***



## **Pine Street Prayer List August, 2012**

Mary Jane Mordan; Shirley Hawley; Kim Azigian; Dave Burns; Agnes Oyster; Norman Troutman, Sr.; Ron Carnahan; Elizabeth (Libby) Fox; Sarah Roberts; Margaret Tanner; Sherry Achey; Carl Rice, Jr.; Charlotte Rice; Shawna Bergenstock; Jim O'Brien; Carol Heim; Tom Beiter, Sr.; Linda Wetzel; Joyce Dawson; Judy Stamm; Ann Marie Binder; Sue Neitz; Spencer Vincent; David Harvey; Red Swank; Cory Fenstermaker; Angie Wilson; Dr. Kevin Shafer; Marvin Fry; Cathy Dressler; Ruth Lehr; Ryan Stevenson; Gladys Keller; Kendra Hoover; Keith Buchhalter; Audrey O'Brien; Greg Potter; Pete Zimmerman; Autumn Kern; Tim Raup; Baby Clive Stevenson; Todd Livziey; Joan Bankus; Erica Miller; Lola Kline; Virginia Frantz; Marr Snyder; Darwin Straub; Nancy Curry; Melissa Thomas; Mike Shoemaker; Cindy Gearhart; Helen Smith; George Sudol; Art Sticklin; Leann Achtenberg; Edith Bender; Nicole Morgan; Tyler Yeager; Donna Brown; Carol Phillips; Harvey Stauffer; Shirley Crossley; Dolores Easton & Family; Dorothy Hagenbuch; Barry Balonek; John Crumb; Brenda Kile; Dianna Ballinger; Audrey Kunkle; Alan Springer; Emily Sue Nilsson; and Walt Rupert.

### **HOMEBOUND AND SPECIAL PRAYER LIST:**

Pauline Mackert; Ken Oberdorf; Pauline Nedrow; Lillian Stahl; D. Jean Cope; Minnie Troutman; Mildred and Paul Gemberling; and Jane Beagle.

### **SPECIAL MILITARY LIST:**

Jordan Zander; Oliver Rice; Halley Dillon; Trevor Patterson; Jeremy Weikel; Tim Moyer; Robert Carpenter; Mark Brumbach; Trevor Stone; Charlie Reedy; Shawn Dyer; Shane Bergenstock; SSGT Andrew Bauman; CPL Jason Lee Smith; Christopher Perry; B.J. Dellinger;



Andrew Conrad; Tim Mekosh;  
CPT Barry Troy; CPT Steven  
Black Barr; Tristan Winter.

*Please use an orange pew card for  
Prayer requests & removals.*

## PRAYER LIST UPDATES

As situations change, prayer is most effective when requests are current and regularly updated. Therefore, we would appreciate it if you would check over the prayer list, and if there is someone that you put on that list that is doing better and can be removed, please contact the Deb at office. You can notify the church office by emailing Deb at [pinestch@ptd.net](mailto:pinestch@ptd.net) or by calling from 9:00 A.M. to 1:00 P.M. Monday through Thursday at 275-2110. Please keep this in mind when you put other relatives and friends on our Prayer List.

◆ + ◆

*To activate the  
Prayer Chain, contact  
numbers are:  
387-1795 or 441-5643.  
No Emails please.*

(To have someone's name included on the weekly Prayer List, please email or call Deb separately at the church office at 275-2110 or [pinestch@ptd.net](mailto:pinestch@ptd.net)).

◆ + ◆

Real generosity is  
doing something  
nice for someone  
who'll never  
find it out.

~ Frank A. Clark

## USE GIFTCARDS!

*Remember to use grocery gift cards if you shop at Weis or Giant. Use gift cards for stores, gas and restaurants by purchasing ahead of time. Your church benefits from every card sold! They can be purchased or ordered in the social hall every Sunday during Fellowship time. Questions, see Jen O'Brien.*



## WEBSITE

**www.  
pinestreetlutheran.  
org**

**And, if you haven't  
registered on the  
site, please do so!  
Check it out today!**

Send any feedback or  
suggestions to Deb at  
[pinestch@ptd.net](mailto:pinestch@ptd.net).  
Thanks!

## The Thank You Corner

A Special Thank You To:

- **Our Home Communion Ministers:** for taking communion to our sick and shut-ins
- **Bill Snover** – for serving as our Financial Secretary.



## FOOD BANK NEEDS

The Danville-Riverside Food Bank is very appreciative of the donations of food and money given by our church members. You may donate the food of the month from the list below or any other non-perishable food item. All donations are distributed to those in need in our community.

*Jan: Canned Vegetables  
Feb: Noodles & Macaroni  
Mar: Canned Fruit  
Apr: Soup  
May: Tuna & Canned Meats  
Jun: Cereal  
Jul: Jell-O & Pudding  
Aug: Peanut Butter & Saltines  
Sep: Spaghetti & Sauce  
Oct: Cereal  
Nov: Noodles & Macaroni  
Dec: Tuna & Canned Meats*

Place food donations in the basket in the narthex near the coat room. To make a monetary donation, please use a blue pew envelope and mark it **Food Bank**.

The Food Bank is open to anyone in need from 1-2 P.M. and 5:30-6:30 P.M. the 1<sup>st</sup> Thursday of the month at Shiloh United Church of Christ, 500 Bloom Street.

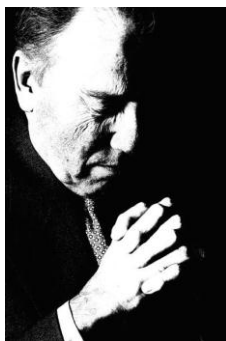
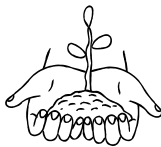
## Leave a Legacy for Ministry and Mission:

Remember: If you have no Will or Trust, the Commonwealth of Pennsylvania's laws will determine who will inherit your property at your death. Commonwealth of Pennsylvania's laws do not include your church or any other charity as a beneficiary. To learn more about how you can make charitable gifts to your church or other charities from your estate call Pr. Greg Kramer at the Lutheran Planned Giving Office at 570-374-2044 or call the ELCA Foundation, 800/638-3522, ext. 2970 or visit our website at [www.elca.org](http://www.elca.org).

## Family Magazine

*Spark Family-Splash in God's Word* magazine is available on the table in the narthex. They are free—take one for your family.

*Come Grow  
With US at Pine  
Street Lutheran!*



**Read Romans 12  
& Pray Daily**



## HOSPITALITY

*Hospitality is the way we come out of ourselves. It is the first step toward dismantling the barriers of the world. Hospitality is the way we turn a prejudiced world around, one heart at a time.*

~Joan D. Chittister in  
*Wisdom Distilled*

If you have a loved one, family member or friend in the military and want them on the prayer list or to have members write to them, please be sure their names and addresses are given to the church office.

Thank you!



## SYNOD CURRENTS

### **Celebrate our German Partnership**

On Sunday, August 5, 2012, the Upper Susquehanna Synod will acknowledge and honor our synod partnership with the Ansbach-Würzburg Kirchenkreis in Germany. Last year, on June 30, 2011, Bishop Robert L. Driesen, Bishop Schmidt, Pastor Lois

Martin, and Pastor Klaus Kuhn, signed a covenant agreement to continue the partnership for another five years. The covenant agreement was to pray for each other and the churches in our covenant, Upper Susquehanna Synod and the Ansbach-Würzburg Kirchenkreis. Other commitments were made to send meeting notes of partnership committee meetings, share other publications of the two entities. A discussion was held on how to fulfill this partnership and suggestions to pursue church-to-church and pastor-to-pastor relationships beginning with electronic media and proceeding through conversations and possible travel. Mutual visits at all levels were encouraged which could include bishops, deans, pastors, church leaders, and parishioners.

In the past years, our partnership was involved with exchanges of youth and choirs. Because large exchanges are no longer possible due to financial constraints on both sides, we look for other ways to be in partnership together. In our world of swift communication, it is possible to have information exchanges easily and quickly. It is possible for us to have exchanges through Skype, social networking, e-mail, etc. But first, we want to identify churches and pastors who are willing to be in such exchanges with churches and pastors in our partnership. Our synod committee has identified areas in which we have in common, as well as areas

where we can learn from each other. In order for our committee to be ready to give names of churches and pastors to our partnership when they are ready, it is important for you to let us know of your interest.

Another topic our committee has considered is how to celebrate the 500th anniversary of the Reformation in 2017. Many events are being planned in Germany, and we would like to be able to offer opportunities to celebrate this important time in the places where Luther lived, studied, taught, preached, and prayed, as well as risked his life for the sake of the Gospel of Christ. We would like to be able to give opportunities to travel where the Reformation took place. In the next year, we hope to be able to put together some possibilities for the year 2017 so that we can plan together for this historic event.

On Sunday, August 5, we ask that you include the Partnership of the Upper Susquehanna Synod and the Ansbach-Würzburg Kirchenkreis (AWK) in the prayers of the church during worship. Please pray also for Bishop Driesen, and Bishop Schmidt, the committee of the USS and the three Deaneries of the AWK that are responsible for partnership activities: Heidenheim, Bad-Neustadt/Saale, and Leutershausen.

Bishop Driesen and Pastor Martin will meet with Dean Klaus Kuhn as he and a family visit Jersey Shore in

August. Bishop Schmidt and a small delegation will come to our synod next year during the week of Synod Assembly. We continue to celebrate the Gospel of Christ, our Lutheran heritage, and our hope in the future as we are made one with Christ.

#### **August 4, 2012-- Emerge Together: Young Adult Summit**

The Emerge Together: Young Adult Summit will welcome 18-30-year-old people of faith and other adults who walk with them (such as campus ministers, camp directors, discernment advocates, and pastors) for a one-day event at Camp Mount Luther on Saturday, August 4, from 9:30 a.m. to 3:00 p.m. Participants will come together for fun, service, and talking about how our faith impacts our lives. Any area young adult is encouraged to come and meet others whose faith is a part of their identity. For more details and an official invitation, please contact Beth Ann Stone at [bethann@uss-elca.org](mailto:bethann@uss-elca.org).

#### **August 18, 2012: Go Teach Education Conference**

Come from 9:00 a.m. to 1:00 p.m. on this Saturday in August for this annual event at Sharon Lutheran Church, Selinsgrove. Have you ever wished you could do more with the Christian Education at your church? Do you want to reach new groups? Are you stuck? Would you just like to brainstorm with others who are as passionate about Christian Education for all ages as you are? Join us for

the Upper Susquehanna Synod's annual events for everyone involved in Christian Education. The event is free; please bring a bag lunch (drinks and dessert will be provided) and a Bible. Along the Way Bookstore will be present. Please register with Authorized Lay Christian Educator Dawne Long at [foldrl@ptd.net](mailto:foldrl@ptd.net) or 570-374-8184.

To download a flyer, click here: <http://www.uss-elca.org/wp-content/uploads/2012/06/Go-Teach-flyer-20121.doc>

To download a bulletin insert, click here: <http://www.uss-elca.org/wp-content/uploads/2012/06/Go-Teach-bulletin-insert-2012.doc>

#### **September 1, 2012: Camp Mount Luther Dandelion Run**

Camp Mount Luther in Mifflinburg will be holding a 5 and 10 Kilometer trail run race at the camp Labor Day Weekend. This is the eleventh year for the event at the camp, located five miles west of Mifflinburg. This will be an entry-level trail race on Mount Luther grounds with proceeds going to the camp. It is being organized by Joel and Shelley Heasley of Middleburg. The Dandelion Run was named in honor and memory of Rev. Glenn E. Heasley, Jr., former Assistant to the Bishop of the Upper Susquehanna Synod of the Evangelical Lutheran Church in America. Glenn's favorite "flower" was the dandelion. The date of

the race is Saturday, September 1, 2012. The start time for the race is 9:00 a.m. Runners decide on race day if they want to do a 5k or 10K (a double loop of the 5K) run. Age group awards will be presented and pre-registered participants will receive a drawstring sports pack. (A limited number will also be available on race day.) Price for entry is \$20 if you pre-register before August 16th. Race day registration is \$25. Registration opens at 7:30 a.m. on race day. Spectators are welcome as well. A kid's fun run (registration for that is one dollar) and a one-mile fun walk will also be held. The same registration fees and amenities apply for the fun walk which will take place on a dirt road. Awards will be given for overall male and female race time, three awards for each age group and an overall master's for male and female in both the 5K and the 10K. The awards ceremony will be immediately following the race. All miles for the course will be marked and there is one water stop on the course. Timing will be electronically done. Registration forms are posted on the camp's website at [www.campmountluther.org](http://www.campmountluther.org) or at [www.midpenntailblazers.com](http://www.midpenntailblazers.com) or you can contact Joel Heasley at 570-765-0267. Shower facilities are available after the race. All proceeds from this event will benefit the camp's general operating fund.

**September 15, 2012:**  
**Women's Retreat at**  
**Camp Mount Luther**

All local women are invited to be participants at Camp Mount Luther's Fall Women's Retreat. The retreat will feature a presentation by Rev. Vickie Brown of Mifflinburg. The retreat will take place at the camp on Saturday, September 15, 2012. It will run from 9:30 a.m. to 2:30 p.m. The day will begin with refreshments and registration at 9:30 a.m. There will be three sessions during the day led by Pastor Brown. Her topic will be "Listen! God is Calling! Discerning God's Call in our Lives as Women of Faith." There will be singing, prayer, and devotions. The day will end around 2:30 p.m. following lunch and devotions. Cost for the retreat is \$16.95, which includes coffee and tea, snacks, lunch, and the program. We encourage you to bring a friend! Registration deadline is September 7. To register, contact Mount Luther, 355 Mt. Luther Lane, Mifflinburg, PA 17844. Checks should be made payable to Camp Mount Luther. If you have questions, call the camp at (570) 922-1587 or e-mail [cml@campmountluther.org](mailto:cml@campmountluther.org)

**September 15, 2012:**  
**Congregational Heritage**  
**Workshops**

The Lutheran Historical Society of the Mid-Atlantic, an ELCA historical organization dedicated to the preservation and promotion of Lutheran heritage and historical resources in the Mid-Atlantic region, will host a series of Congregational Heritage

Workshops on the campus of the Lutheran Theological Seminary at Gettysburg, Pennsylvania, on Saturday, September 15, 2012, from 9:00 a.m. to 3:00 p.m. Registration will be 8:30-9:00 a.m. with a continental breakfast in Valentine Hall, followed by welcoming remarks and opening devotions, and a catered lunch is included. Workshop sessions include 1) Archives for Small Churches, 2) Local Lutheran Records, 3) Oral History; 4) Archival Preservation, 5) Congregational Anniversaries, 6) Pennsylvania German Baptismal Records, 7) Library Resources for Lutheran History, 8) Writing Congregational Histories, and 9) Dealing with Dirty Linen (trouble-shooting the negative aspects of congregational history and anniversary planning). Workshop leaders include professional historians, archivists, and ordained clergy. Registration is \$40 for Historical Society members, or \$45 for non-members. Congregations sending multiple attendees may register the initial person at the full rate, then all subsequent attendees at a reduced rate (\$35 for each non-member, or \$30 for each Society member). Registration forms and payment are due by September 1, 2012, with checks made payable to the Lutheran Historical Society of the Mid-Atlantic. Further information, including workshop brochures and registration forms, may be obtained on the LHSMA web site at [www.lhsmidatlantic.com](http://www.lhsmidatlantic.com) or



by contacting workshop chair John Deeben at (410) 257-9373 or [jdeeben@aol.com](mailto:jdeeben@aol.com).

#### EMERGENCY HOTLINE NUMBERS

Food Bank/American Red Cross: 275-1441  
Good Samaritan Mission Center: 275-2500  
Women's Center: 784-6631  
Child Abuse Hotline: 800-932-0313  
Poison Center: 800-521-6110  
Alcoholics Anonymous: 286-7436 or 654-0488 (Northeast Inter-group)  
Al-anon: 800-628-8290 (National Hotline)  
Narcotics Anonymous: 988-7177  
Gambler's Anonymous: 717-652-4400

#### NEWSLETTER DEADLINE

The Deadline for the next edition of the *Newsletter* is **August 15 for the September Newsletter**. All articles submitted are subject to editing; typewritten articles are especially appreciated. It may be to hold articles submitted after the deadline date until the next month.



### W/ELCA Highlights

#### EXECUTIVE BOARD

The next Women's Executive Board meeting will be August 30 at 8:00 A.M. in the Library of the Luther House.

#### Coming Up:

- ✓ Oct 7: Blanket Sunday
- ✓ Oct 29: Peace Pole [Synod Office]
- ✓ Nov 3: W/ELCA Event
- ✓ Dec. 8: Quarterly 2 PM

#### (W)holy, (W)holy, (W)holy Health Healing and Wholeness

*"Listen to me, my child, and do not disregard me, and in the end you will appreciate my words. In everything you do be moderate, and no sickness will overtake you." (Sirach/Ecclesiasticus 31:22)*

The book of Sirach/Ecclesiasticus is located in the Apocrypha, a group of religious writings which were not received into the canon or Bible. The Apocrypha covers the inter-testamental time - between the end of the Old Testament, and the beginning of the New. Sirach has a style similar to the book of Proverbs, in that its function seems to be intent on imparting wisdom to the reader. This month's quote seems appropriate when we look at an emerging problem of diabetes - both Types 1 & 2 - among our children.

Type 1 diabetes occurs when the immune system attacks the insulin-producing cells in the pancreas, which causes insulin production to drop then stop. Type 2 diabetes is characterized by the body becoming resistant to insulin. The pancreas reacts by trying to work harder to overcome the resistance. This can lead to the organ not being able to produce enough insulin to meet the body's needs. Insulin is required for our cells to take in the glucose/sugar required to function properly.

We've heard a great deal about the rise of diabetes in our country's children. The Children's Hospital of Philadelphia has (CHOP) has

provided this month's signs and symptoms of this disease. (Daily, F. April 2012. *Children's Health Tip of the Week: Diabetes in Children: Warning Signs and Symptoms*. The Children's Hospital of Philadelphia)

Both Types 1 and 2 can share the following symptoms:

- Excessive urination
  - Excessive thirst
  - Fatigue (from cells not being able to get the energy they need)
  - Fungal and bacterial infections which thrive in high-sugar environments
- Additional symptoms of Type 1 diabetes include:
- Dry mouth
  - Weight loss despite increased hunger as the child's body begins to burn fat as fuel
  - Vomiting - when the body burns fat, it gives off toxic acids known as ketones; ketones trigger vomiting
  - Blurred vision - high blood sugar can temporarily alter the shape of the eye, affecting vision.

Children with Type 2 may have milder symptoms. Additional symptoms and risk factors may include:

- Acanthosis nigricans - a skin condition causing light brown-to-black velvety textured areas on the skin, typically on the sides and back of the neck, in the underarm and groin areas
- Slowed healing of sores and cuts
- Family history of diabetes and other risk factors; conditions such as polycystic ovarian syndrome, high blood pressure and high



cholesterol are associated with Type 2 diabetes

- Being overweight – a child with a BMI (body mass index) over 95% for his/her age is at greater risk for the development of Type 2 diabetes.

If you notice any of these signs and symptoms in your child, contact his/her healthcare provider. Simple testing can rule out diabetes as the cause of his/her symptoms.

*Debbie Best RN, FCN*



## Nurse's Notes

**\*Note** – all of this month's Notes were taken from the July 2012 issue of *Prevention Magazine*.

### August 5

There are more than half a million sweat glands in your feet, so it's no wonder your tootsies become extra fragrant when hot weather hits.

Podiatrist Carolyn McAloon, DPM outlines how you can keep those feet smelling sweet:

- **Give shoes a dry spell.** Make sure that each pair gets time off to breathe: shoes need at least 24 hours to dry out, according to Dr. McAloon, so don't wear the same pair every day.
- **Don't be a closet case.** Most of us toss our shoes in the closet, but fungus breeds in small dark spaces. Leave footwear in an area with ample air circulation.

- **Soak your toes.** To fight odor, submerge feet in warm water for 15 minutes a few times a week. Add 4-6 drops of tea tree oil, which acts as an antimicrobial.
- **Sock it to them.** All-cotton socks can leave your feet dripping. Try a sweat-wicking alternative like a nylon-cotton blend or an eco-friendly wool. (pg. 9)

### August 12

#### **Switch to a lighter lemonade.**

Quench your thirst with something healthier than sugary bottled lemonade. Make your own by squeezing a lemon into a glass of water and sweeten with just a little antioxidant-rich honey. You'll cut calories and preservatives, and even better, those fragrant lemons can improve your mood, according to research from Ohio State University. So for the best results, inhale deeply while you enjoy. (pg. 12)

### August 19

#### **Pump up your heart health by replacing a daily serving of red meat with a serving of beans.**

You'll cut your risk of heart disease by as much as 19%, according to new Harvard University research. For mouthwatering bean recipes, visit

[www.prevention.com/beans](http://www.prevention.com/beans). (pg. 12)

### August 26

#### **Stop puffing around Fluffy!**

Secondhand smoke is a double threat for pets, according to research from Oklahoma State University. Besides being inhaled, smoke settles on their

fur and is ingested when they lick themselves. Cats and dogs whose owners light up are more likely to get a variety of cancers. If you can't quit for yourself, do it for your pet! (pg. 125)

## Ten guidelines for dealing with people

1. Learn to remember names. A person's name is very important to him or her.
2. Be a comfortable person so there is no strain in being around you.
3. Learn to be easygoing so things won't bother you.
4. Don't be egotistical; don't give the impressions that you know it all.
5. Learn to be interesting so people will want to be with you and get something stimulating from you.
6. Get the "scratchy" elements out of your personality.
7. Drain off your grievances. Honestly try to heal every misunderstanding you have.
8. Work at liking people until you learn to do so naturally. Sure, everyone has faults; overlook them.
9. Never miss a chance to say "congratulations" or to give support at a difficult time.
10. Develop spiritual depth in yourself so you have something to pass on to the people you know. Learn how to share this strength with others.

~ Norman Vincent Peale